

Q3 2024

HEPTAGON EUROPEAN FOCUS EQUITY FUND

* A sub-fund of Heptagon Fund ICAV

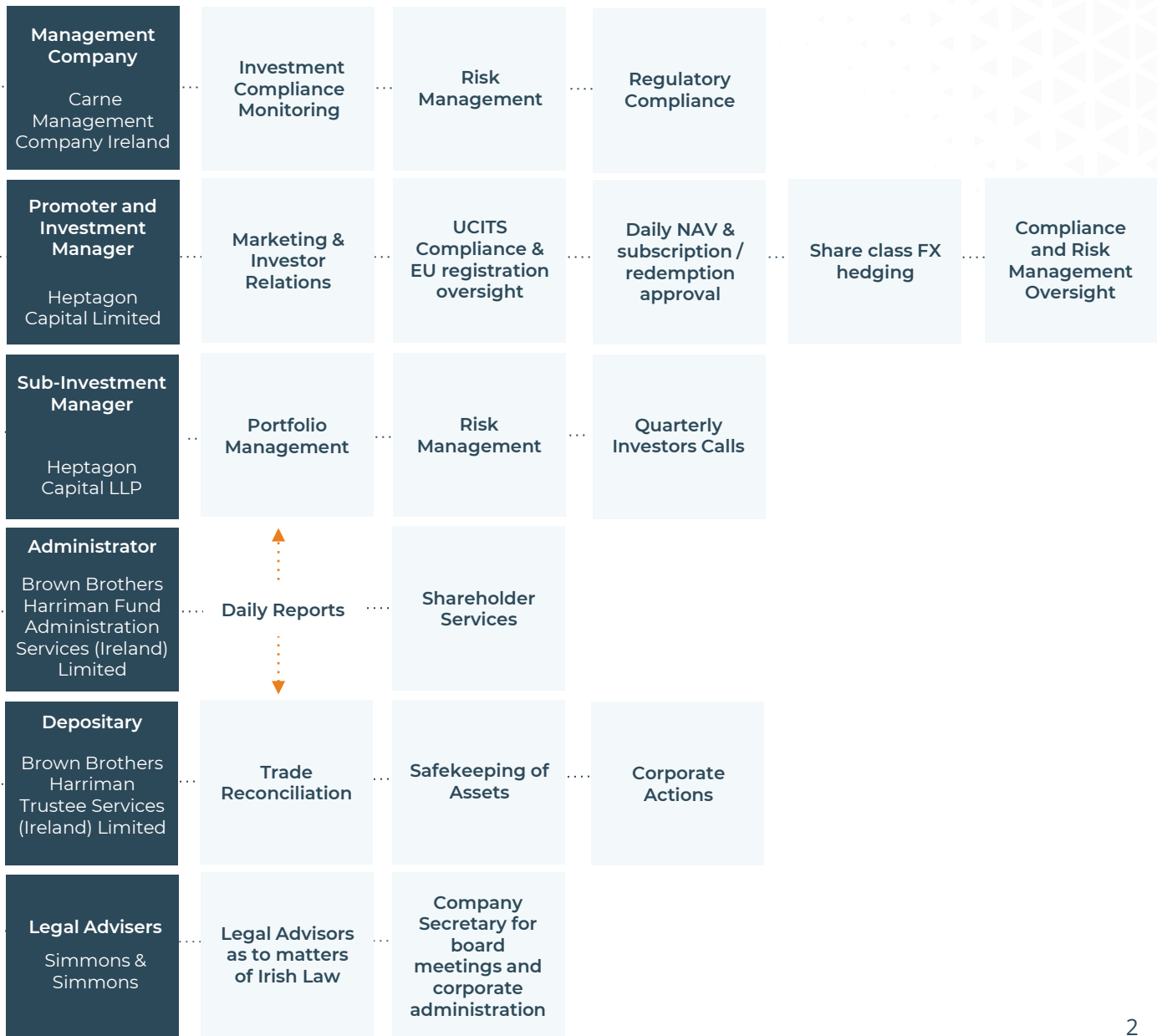
The Fund has been classified as an Article 8 for the purposes of the EU's Sustainable Finance Disclosure Regulation. Please see [Prospectus](#) for further information on the Fund's environmental and/or social characteristics and relevant sustainability risks.

Heptagon Capital, 63 Brook Street, Mayfair, London W1K 4HS
Tel: +44 20 7070 1800
(FRN 403304)

Authorised & Regulated by the Financial Conduct Authority
12 Endeavour Square, London, E20 1JN

IRISH UCITS FUND STRUCTURE

The diagram below explains the Irish UCITS fund structure and the relationship between the Investment Manager, Sub-Investment Manager and other relevant service providers for the Heptagon European Focus Equity Fund.



HEPTAGON CAPITAL - INVESTMENT MANAGER

Independent
boutique
asset
management
firm

\$14.3bn**
Assets under
Management
and Advice

Established in
2005

5 Office
Locations

45 Total
Employees

18 Different
Nationalities

17
Languages

Heptagon Capital

Heptagon UCITS Fund Platform

In-house

- **Heptagon European Focus Equity Fund**
- Heptagon Future Trends Equity Fund
- Heptagon Future Trends Hedged Fund

Sub-advised

- Driehaus Emerging Markets Sustainable Equity Fund
- Driehaus US Micro Cap Equity Fund
- Driehaus US Small Cap Equity Fund
- Heptagon Kettle Hill US L/S Equity Fund
- Kopernik Global All-Cap Equity Fund
- Qblue Global Sustainable Leaders Fund
- WCM Global Equity Fund
- Yacktman US Equity Fund

External Manager Platform

- Hedge Funds
- Private Equity
- Alternative Funds
- Long Only Funds
- Real Estate

Discretionary Portfolio Management

- Discretionary Portfolio Management
- Concentrated Equity Management
- Hedging and Overlay Strategies
- Asset Allocation Advice
- Bespoke Mandates

Signatory of:



PRI is a leading global network for investors who are committed to integrating environmental, social and governance considerations into their investment practices and ownership policies. Heptagon Capital signed the UN PRI on 10th July 2019.

***Heptagon Capital** includes **Heptagon Capital Limited**, licensed to conduct investment services by the Malta Financial Services Authority and **Heptagon Capital LLP**, authorised and regulated by the Financial Conduct Authority

** As of 30/06/2024



We Seek

- ✓ Great companies in good industries
- ✓ Focused on doing one thing well
- ✓ Industry leadership (1# or 2# positions)
- ✓ Top-quality management and clean accounts
- ✓ Highly ethical companies in the widest sense

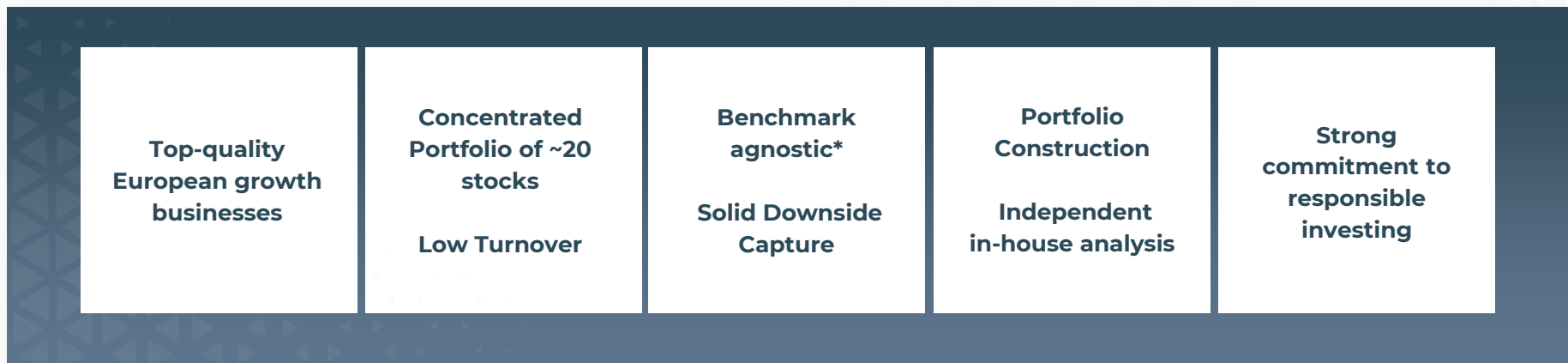


We Avoid

- ✗ Commodity plays
- ✗ Banks and Insurance companies
- ✗ Asset heavy Industries
- ✗ Overly diversified business models
- ✗ Exclusion-list of non-grata industries

HEPTAGON EUROPEAN FOCUS EQUITY STRATEGY

| Where earnings lead, stocks follow...



| Heptagon European Sustainability Ranking

**Percent Rank in
Global Category**

41



**Europe Large-Cap Growth
Equity Fund**

Past performance is no guide to future performance and the value of investment and income from them can fall as well as rise.

INVESTABLE CANDIDATES

1

Leaders

Leaders with
global footprint

2

Core Competence

Wide geographic
footprint -
customers
(no diversification
operationally)

3

Price Makers

Price-Makers -
not Price-Takers

ASSA ABLOY



L'ORÉAL



ATTRIBUTES AND COMMONALITIES OF UNIVERSE COMPANIES

” ‘In the long-run, an investor will get a better return by holding an average-quality company in a good industry, rather than holding a good company in a bad industry since poor fundamentals will ultimately wreck an investment case’

Christian Diebitsch

I We cherry pick by seeking great companies in good industries



Great
Companies in
Great
Industries



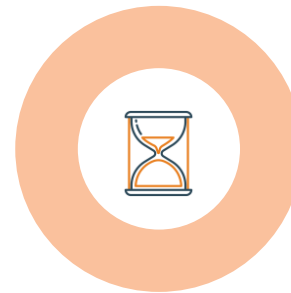
Industry
Leadership



Top Quality
Management
Team



Clean
Accounts



Time Tested



Highly Ethical



CHARACTERISTICS OF A GOOD INDUSTRY



Growth and sustainability

+6% per annum, or
~2x global GDP growth



Continuous growth of the end market

by volume and value



Growth should be organic

by volume growth and price
increase

HEPTAGON CAPITAL – ESG PHILOSOPHY & PRINCIPLES

| We believe that the incorporation of ESG factors in the investment process leads to enhanced risk adjusted returns and investment opportunity.



We promote sustainable investing in a way that is transparent and puts our clients' interests first.



We seek to drive positive outcomes in ESG policies through proxy voting and/or active dialogue with invested companies.



We aim to meet ESG best practice in our in-house funds and incorporate ESG factors across our UCITS platform.



We seek to collaborate with organizations that promote industry best practice for incorporating ESG at the firm and fund level.



Our approach to ESG considers the diversity of our investment teams and is tailored to each individual investment style.



Our policy is reviewed on an annual basis by the ESG committee to ensure that our practices continue to evolve.

| Genuine Commitment

Signatory of:



ESG ANALYSIS AS PART OF DUE DILIGENCE

European Focus integrates several ESG strategies from Heptagon’s sustainable investing framework as an intrinsic part of the investment process.



Exclusion Screening

- Intentionally avoiding investments in certain industries or issuers based on values/norms or risk-based criteria.



ESG Integration

- The systematic and explicit inclusion by investment managers of ESG factors into financial analysis and investment decisions.



Company Engagement

- Driving positive outcomes in ESG related policies through proxy voting and/or active dialogue with invested companies.



SFDR Classification Article 8

Past performance is no guide to future performance and the value of investment and income from them can fall as well as rise

Source: Heptagon Capital, MSCI ESG Research, FNG Seigel. MSCI ESG rating as of 31/05/2024

THE INVESTMENT UNIVERSE AND THE SCREENING PROCESS

“If it ain’t broke, don’t fix it”

- Around **40 companies** of which we select around **20 stocks**
- Adding new companies to the universe – a two-step process: **quantitative** and **qualitative**
- **ESG Exclusion list**
 - Fossil Fuel Extraction
 - Tobacco
 - Adult Entertainment
 - Gambling
 - Conventional & Controversial Weapons



ASSA ABLOY



L'ORÉAL



intertek
Total Quality Assured.



adyen

HAYS

ESSILO. LUXOTTIC.

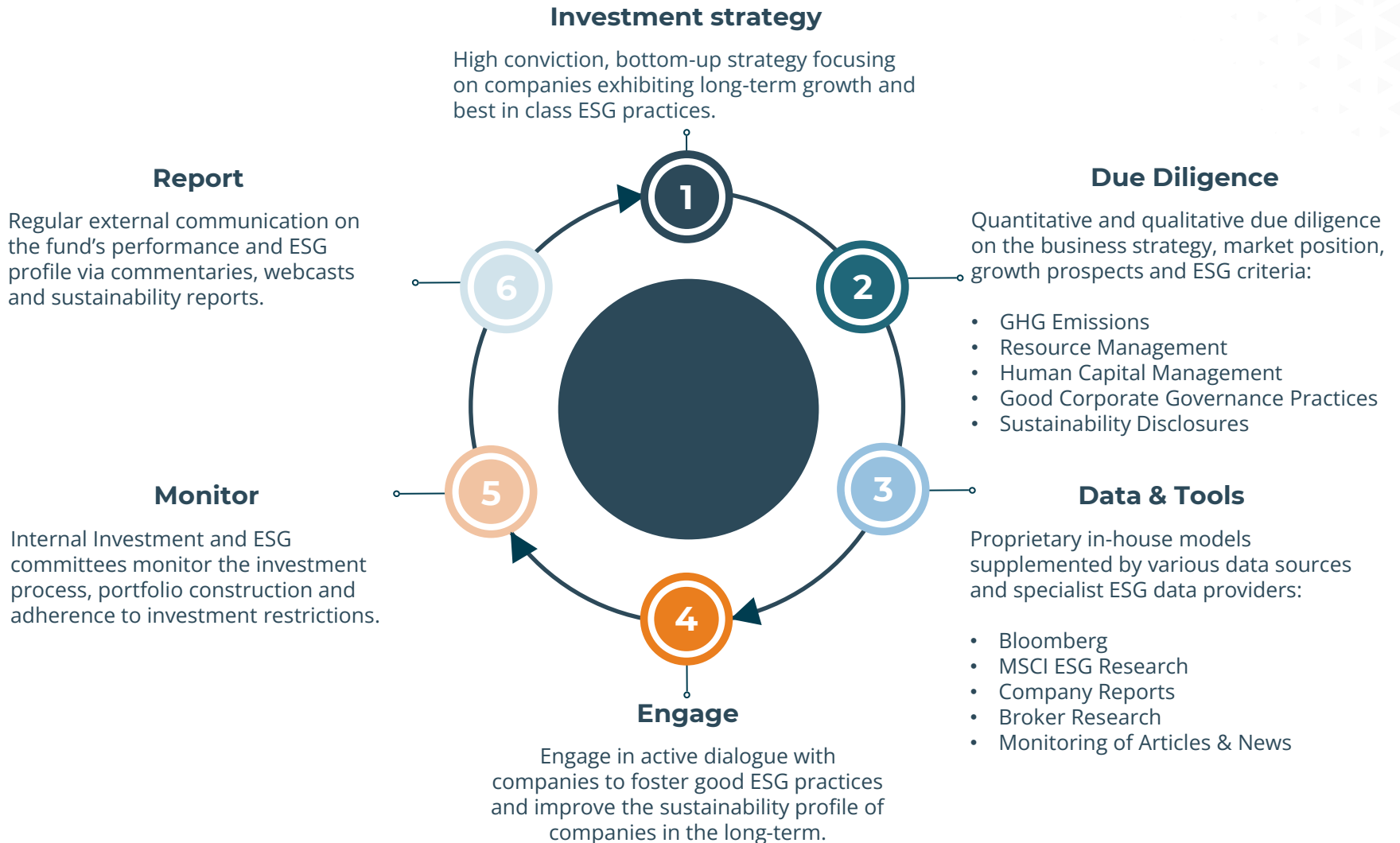


HERMÈS
PARIS

LVMH

ESG ANALYSIS AS PART OF DUE DILIGENCE

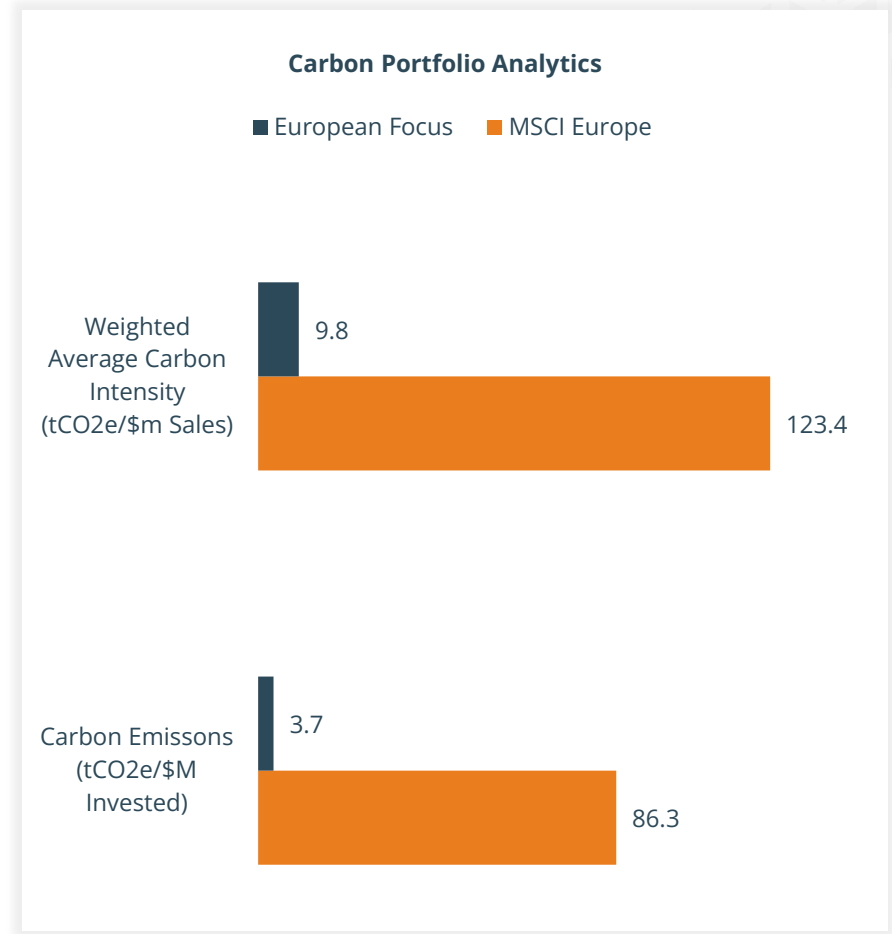
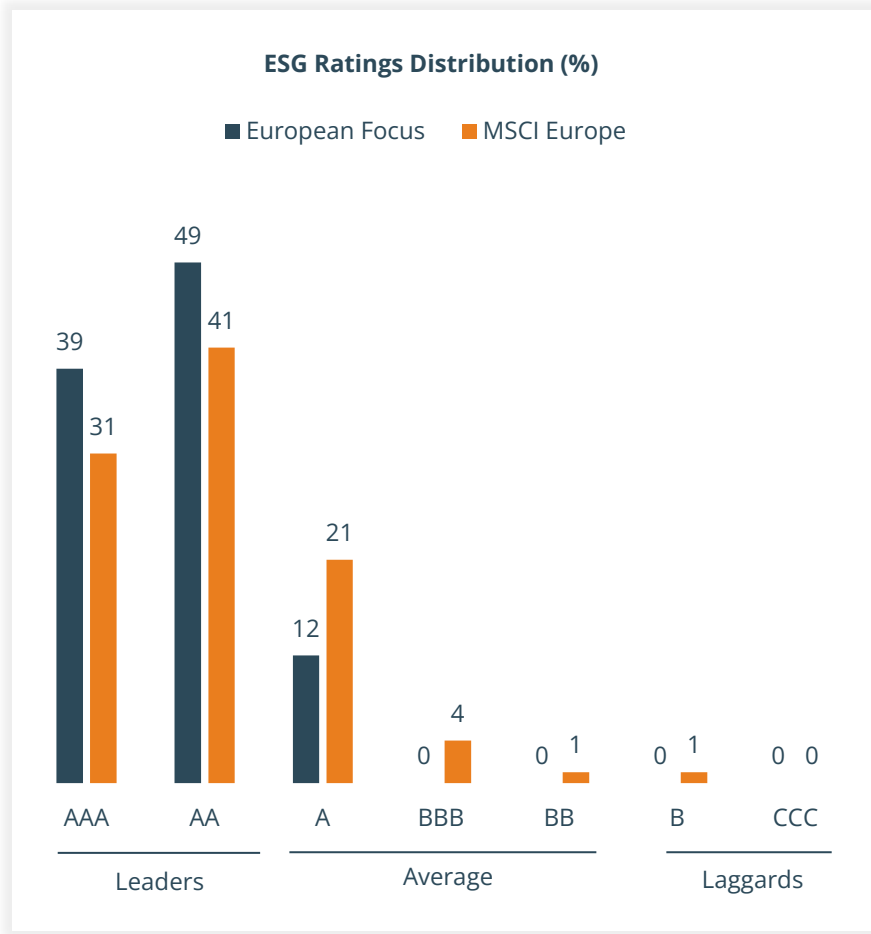
The Fund integrates ESG factors alongside traditional financial analysis within the investment process with the aim to mitigate risk and lead to enhanced long-term returns



ESG OUTPERFORMANCE AND LOW CARBON RISK

Enhanced risk adjusted returns and improved ESG characteristics vs MSCI Europe

88% of the portfolio is invested in ESG Leaders and the weighted average carbon intensity is 82% below the benchmark



Past performance is no guide to future performance and the value of investment and income from them can fall as well as rise

Source: Heptagon Capital, Calculated on MSCI Analytics, MSCI ESG Research as of 30/06/2024. ESG Ratings are on a scale of AAA to CCC. MSCI Carbon Metrics include Scope 1+2 emissions and are based on a \$1,000,000,000 portfolio allocation. ESG Ratings and Carbon Analytics cover equities held in the portfolio only.

GROWTH AND SUSTAINABILITY THEMES OF THE UNIVERSE

Universe Stocks

Growth Theme

UN SDGs



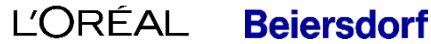
Environment

- Environmental sustainability



Increased Affluence

- Quality over Quantity – consumers moving up the value chain



Emerging Opportunities

- Creation of a middle-class in New Economies



Changing technologies

- Internet and mobile solutions



Shifting business models

- Deregulation, environment, outsourcing, internet



Pockets of demand

- B2G (government) – B2B (corporations) – B2C (households)



Ageing Population

- Healthcare-spending, lifestyle-changes



Fashion Trends

- Luxury goods and international apparel



PORTFOLIO CONSTRUCTION

Buying the right stock in the right market environment

Equity Market Cycle

Early Cycle

- Recovery stocks
- Potential acceleration of revenue growth

Mid-Cycle

- Growth
- Sequential acceleration / deceleration
- Margin expansion
- Potential for PE expansion

Late Cycle

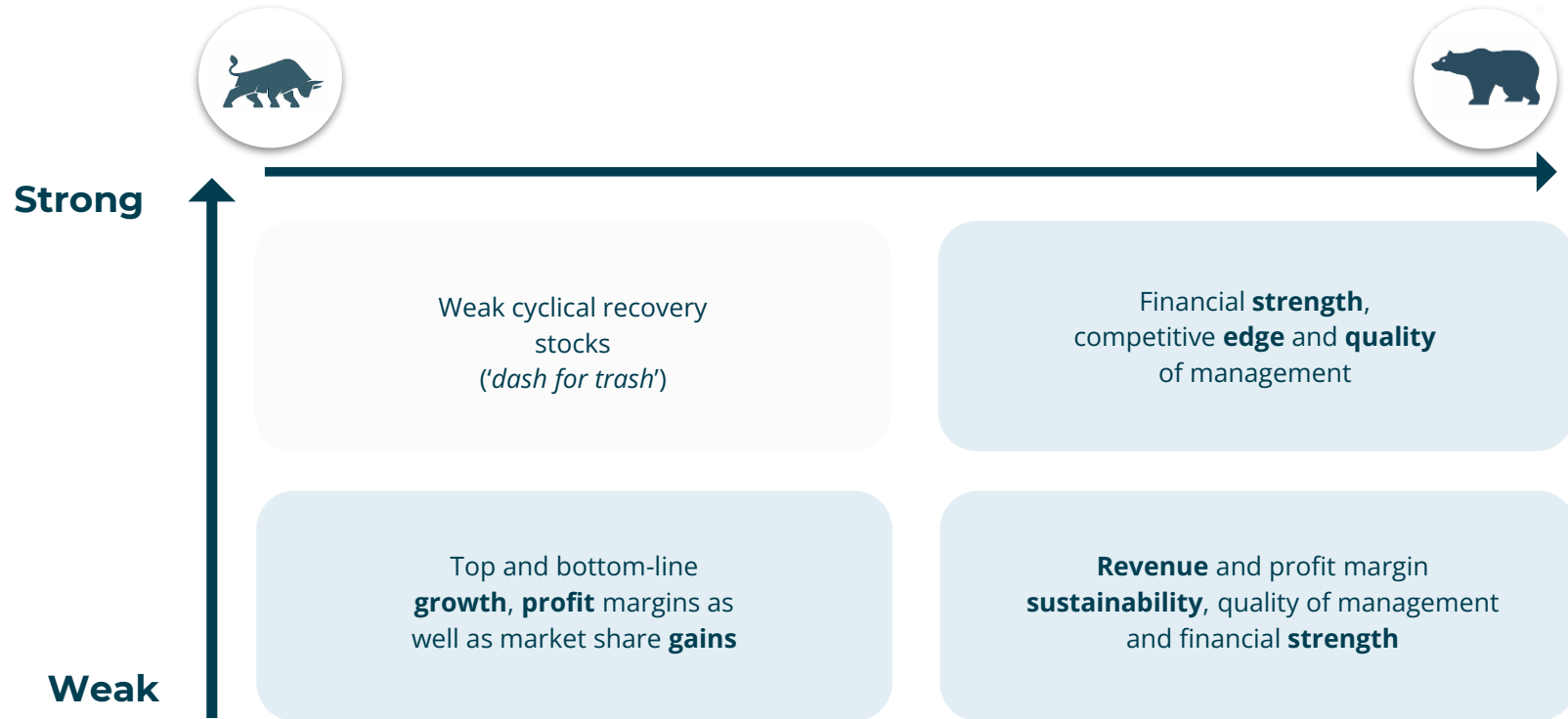
- Stocks with lower valuations
- Minimum sequential deceleration (if any)
- Preservation of profitability
- Protection of PE compression



Top-down vs. Bottom-up reconciliation

SLOW AND STEADY WINS THE RACE

The investment strategy performs well in 3 out of 4 equity market environments



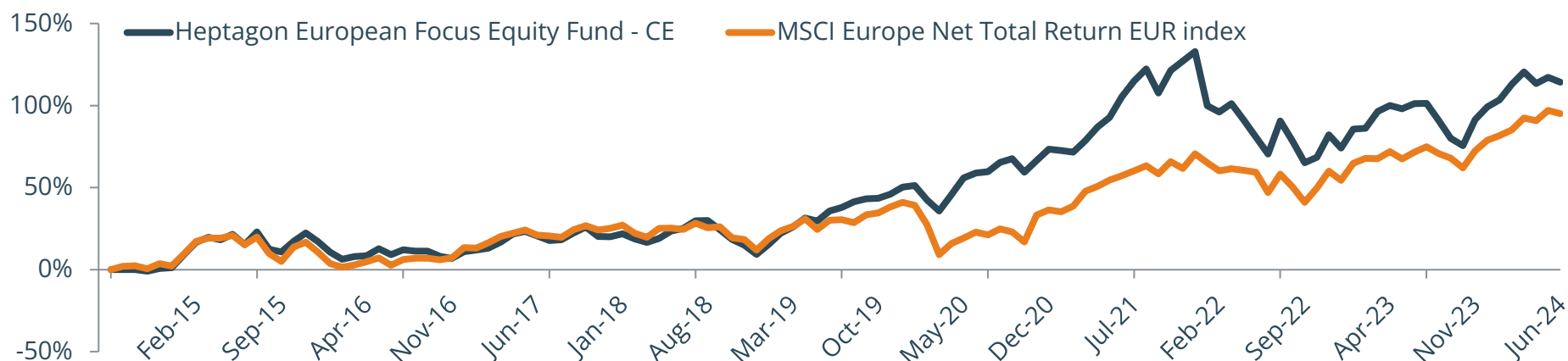
The Heptagon European Focus Equity Fund was launched 26th August 2014

Monthly Returns: Class CE - Net of fees

	Jan	Feb	Mar	Apr	May	Jun	Jul	Aug	Sep	Oct	Nov	Dec	Total	MSCI Europe	Excess Return
2014								0.0%*	0.0%	-1.0%	1.8%	0.5%	1.2%*	0.0%*	1.2%
2015	7.8%	6.9%	2.5%	-1.2%	2.8%	-5.2%	6.8%	-8.7%	-1.5%	5.8%	4.4%	-4.3%	15.5%	8.2%	7.3%
2016	-5.5%	-3.8%	1.5%	0.5%	3.9%	-3.2%	2.6%	-0.6%	-0.1%	-2.9%	-1.2%	3.9%	-5.2%	2.6%	-7.8%
2017	1.0%	1.0%	3.1%	4.2%	1.4%	-2.3%	-2.3%	0.4%	3.5%	3.0%	-4.6%	-0.2%	8.2%	10.2%	-2.0%
2018	1.5%	-2.6%	-1.7%	2.0%	3.7%	1.4%	3.6%	0.2%	-4.3%	-4.7%	-2.9%	-5.0%	-8.9%	-10.6%	1.6%
2019	5.5%	5.9%	3.1%	4.3%	-1.3%	4.7%	1.6%	2.4%	1.3%	0.3%	1.8%	2.9%	37.5%	26.0%	11.5%
2020	0.6%	-5.8%	-4.8%	7.3%	7.0%	1.9%	0.5%	3.5%	1.4%	-4.9%	4.4%	4.2%	15.4%	-3.3%	18.7%
2021	-0.5%	-0.5%	4.1%	4.6%	3.1%	6.5%	4.7%	3.5%	-6.7%	6.7%	2.6%	2.6%	34.3%	25.1%	9.2%
2022	-14.2%	-1.9%	2.6%	-5.0%	-5.4%	-5.7%	11.8%	-6.5%	-7.4%	2.0%	8.1%	-4.4%	-25.3%	-9.5%	-15.8%
2023	6.6%	0.3%	5.5%	1.9%	-1.0%	1.6%	0.0%	-5.1%	-5.7%	-2.5%	9.0%	4.1%	14.5%	15.8%	-1.4%
2024	2.2%	4.6%	3.6%	-3.2%	1.7%	-1.4%							7.5%	9.1%	-1.5%

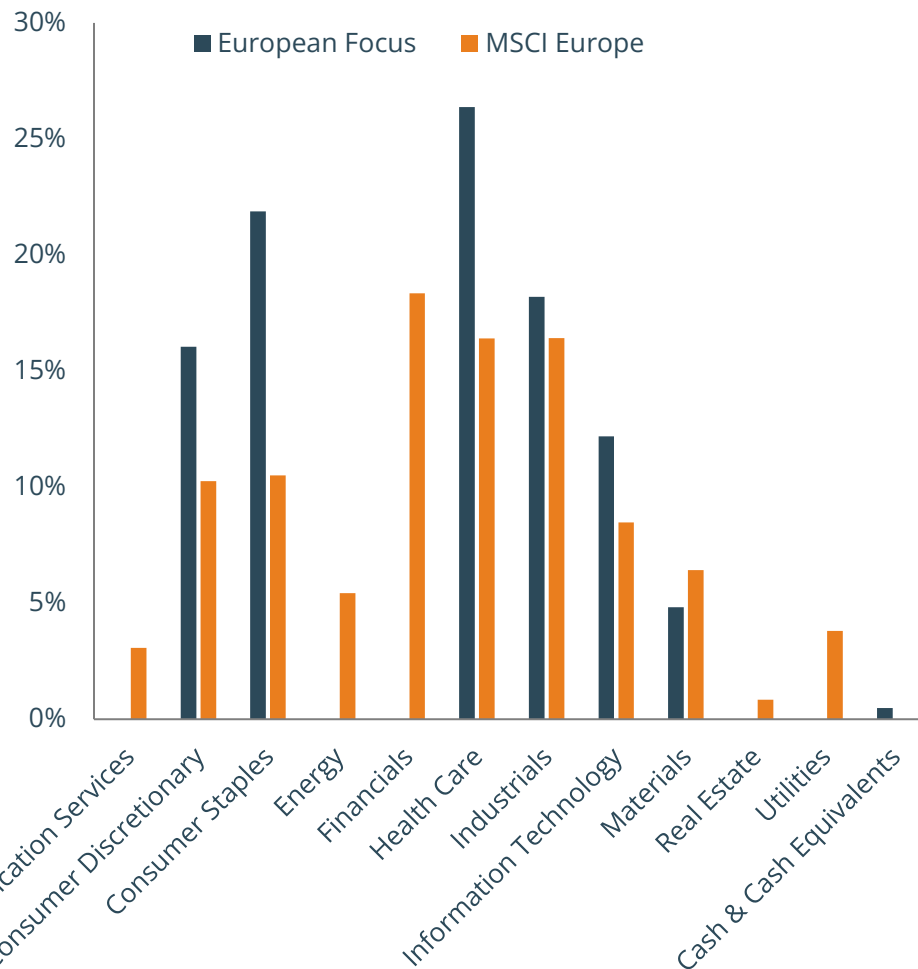
* Since CE share class inception 26/08/2014

Cumulative Performance Since Inception



Past performance is no guide to future performance and the value of investment and income from them can fall as well as rise

Portfolio Sector Weights



Portfolio Characteristics

	Fund	MSCI Europe
Price / Prospective Earnings * **	32.1	13.8
Price / Book *	6.2	1.9
Price / Sales *	2.2	1.4
Price / Cash Flow *	22.5	9.6
Long-Term Earnings %	10.9	8.4
Historical Earnings %	7.0	8.2
Active Share %	82.6	-

*Forward-looking based on historical

Above data as of 31/05/2024

** 'For portfolios, Morningstar calculates this data point by taking an asset-weighted average of the earnings yields (E/P) of all the stocks in the portfolio and then taking the reciprocal of the result.'

Portfolio Statistics

31/08/2014 to 30/06/2024	Fund	MSCI Europe
Ann. Return (%)	8.05	6.81
Ann. Std. Dev (%)	14.75	14.10
Ann. Alpha	1.72	0.00
Correlation	0.85	1.00
Beta	0.87	1.00
R Squared	0.72	1.00
Up Capture Ratio	1.00	1.00
Down Capture Ratio	0.92	1.00
Sharpe Ratio	0.29	0.22
Ann. Tracking Error (%)	9.19	0.00

Past performance is no guide to future performance and the value of investment and income from them can fall as well as rise

“The Fund shines when it rains”

Quarterly Down Capture Analysis since inception*

	European Focus	MSCI Europe NR	+/-
Average downmarket performance per quarter	-2.7%	-3.4%	+0.7pp
Max downmarket for MSCI Europe NR (in March 2020)	-4.8%	-14.3%	+9.5pp
Max downmarket for European Focus (in January 2022)	-14.2%	-3.2%	-11.0pp
Number of observations	33	33	

Quarterly Up Capture Analysis since inception*

	European Focus	MSCI Europe NR	+/-
Average upmarket performance per quarter	4.0%	4.4%	-0.4pp
Max upmarket for MSCI Europe NR (in November 2020)	4.4%	13.9%	-9.5pp
Max upmarket for European Focus (in November 2022)	9.0%	6.4%	+2.6pp
Number of observations	36	36	

Conclusion

When the market **falls**, European Focus has historically outperformed and protected capital on the downside

When the market **advances**, the Fund has historically participated less on average than the market

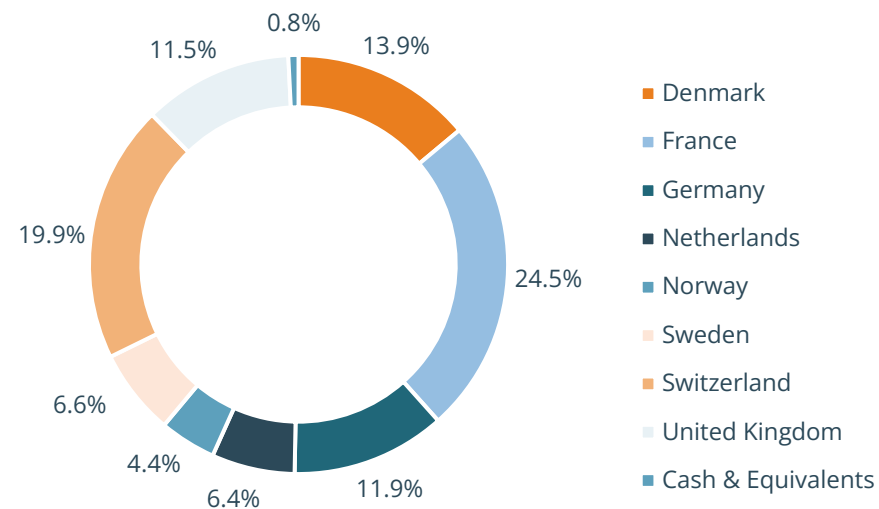
Past performance is no guide to future performance and the value of investments and income from them can fall as well as rise.

Full Portfolio Holdings

Health Care	27.7
Novo Nordisk A/S Class B	9.6
EssilorLuxottica SA	4.3
Coloplast A/S Class B	4.3
Straumann Holding AG	4.3
Lonza Group AG	3.1
Consumer Staples	22.5
L'Oreal S.A. TEMP	6.2
Beiersdorf AG	4.8
Chocoladefabriken Lindt & Spruengli AG Partizipsch.	4.2
Diageo plc.	3.7
Nestle S.A.	3.5
Industrials	18.8
Atlas Copco AB Class A	6.6
PageGroup PLC	4.8
TOMRA Systems ASA	4.4
Hays plc	3.0
Consumer Discretionary	16.3
Hermes International SCA	5.7
adidas AG	4.9
LVMH Moet Hennessy Louis Vuitton SE	3.5
Zalando SE	2.2
Information Technology	11.1
ASML Holding NV	6.4
Dassault Systemes SA	4.7
Materials	4.5
Givaudan SA	4.5
Cash & Equivalents	7.1

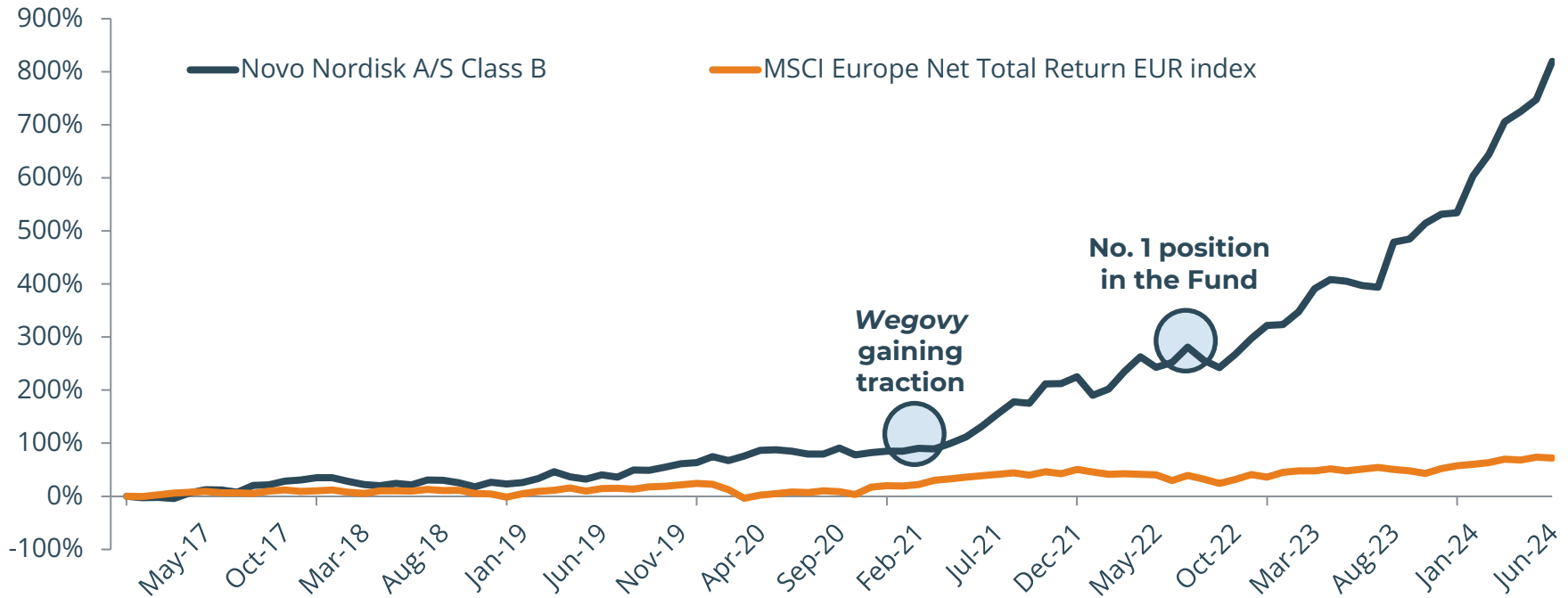
Market Cap Breakdown

Size	Definition	Fund Exposure
Small	<\$10bn	4.3%
Large	>\$20bn	80.5%
Cash		14.4%
Total		100.0%



CASE STUDY: NOVO NORDISK

Novo Nordisk share price development since initial purchase



Initial purchase:
Fund Launch

Two consecutive
Quarters of profit
warnings led to exiting
position in late 2016

Reinvestment
into the fund in
December
2017

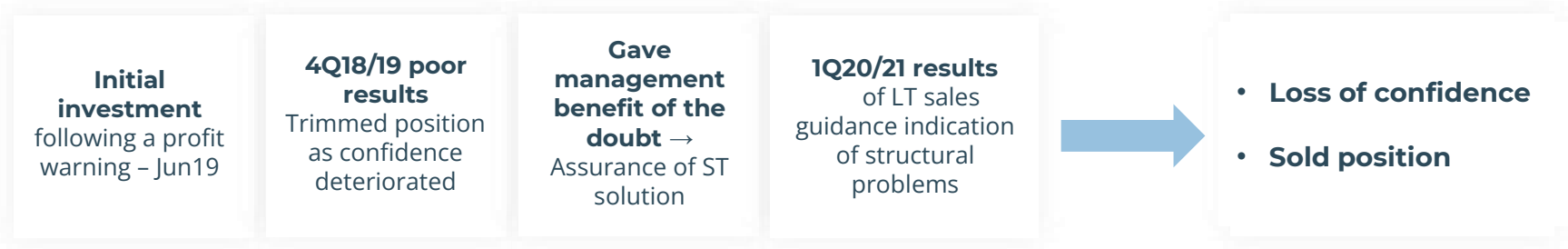
2021: GLP-1 and
Wegovy taking Novo
from strength to
strength

**Current
position size
in Novo
Nordisk: 9.6%**

Past performance is no guide to future performance and the value of investment and income from them can fall as well as rise

CASE STUDY: CHR HANSEN

Chr Hansen share price development since initial purchase



Past performance is no guide to future performance and the value of investment and income from them can fall as well as rise

RISK MANAGEMENT

Risk

Valuation Risk

- Multiple-compression when transitioning from bull to bear market
- Company goes ex-growth

Growth risk

- Revenue growth structurally decelerates (weaker fundamentals)
- Profit margin expansion slows down

Business risk

- Poor management execution
- Weakening financials



Mitigation

Continuous close screening of stocks

- Rotation to lower P/E stocks
- Continuous analysis of consensus expectations

Balance of top-down vs. bottom-up economics

- Ongoing screening of news flow

Limited because of superior quality

- Continuous industry screening
- Close contact with management
- Continuous internal research

PORTFOLIO MANAGER'S TRACK RECORD

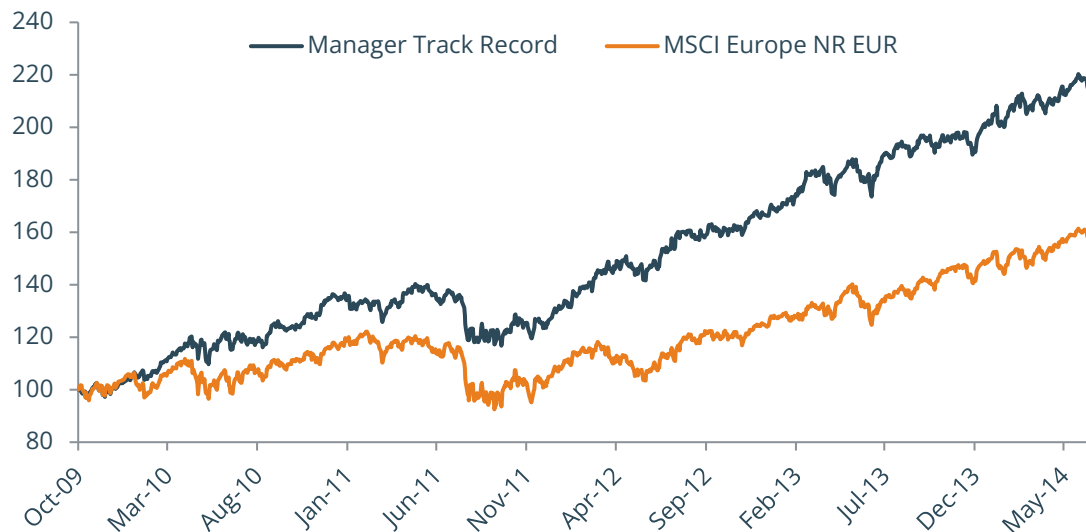
This presentation provides information on the Heptagon European Focus Equity Fund (the "Fund"), a sub-fund of Heptagon Fund ICAV which is an open-ended umbrella type investment vehicle authorised pursuant to UCITS regulations. Heptagon Capital Limited is the Investment Manager and Heptagon Capital LLP is the Sub-Investment Manager meaning Heptagon Capital LLP exercises discretionary investment authority over the Fund. Heptagon Capital Limited and Heptagon Capital LLP are referred to jointly as Heptagon Capital.

Christian Diebitsch is the Portfolio Manager of the Fund. Since the Fund launched in August 2014, the following pages in this presentation make reference to Christian's historical track record which was achieved while he was working at a prior firm unaffiliated with Heptagon Capital. The prior firm performance is presented to show a representative European equity account with similar investment objectives, policies and strategies for which Christian Diebitsch acted as Portfolio Manager. The performance should not be viewed as that of Heptagon Capital or an indication of how Heptagon Capital will perform in the future. Performance of Heptagon Capital in the future will be different from the Portfolio Manager's Track Record shown due to factors such as differences in cash flows, fees, expenses, performance calculation methods, and portfolio sizes and composition. Christian Diebitsch was Sole Portfolio Manager from October 16, 2009 to July 15, 2014.

Any performance data quoted represents past performance and does not guarantee future results. Performance figures are also shown for the MSCI® Europe Index (net Return, "MSCI Europe Index"). The MSCI Europe Index is a trademark/service mark of Morgan Stanley Capital International. The MSCI Europe Index is a market capitalization-weighted index designed to capture large and mid cap companies across 15 Developed Market countries in Europe; is shown for illustration only; and cannot be purchased directly by investors.

MANAGER TRACK RECORD

Christian Diebitsch has managed a European UCITS Fund from 16th October 2009 to 15th July 2014 utilising the same investment style as the Heptagon European Focus Equity Fund



01/11/09 to 30/06/14

Ann. Return
Ann. Std. Dev
Alpha
Correlation
Beta
R Squared
Up Capture Ratio
Down Capture Ratio
Sharpe Ratio
Tracking Error

Manager Track Record	MSCI Europe
18.34%	11.13%
10.12%	11.98%
8.37%	0.00%
0.75	1.00
0.63	1.00
84.07	100.00
78.93	100.00
6.92	100.00
1.64	0.79
8.06	0.00

	Jan	Feb	Mar	Apr	May	Jun	Jul	Aug	Sep	Oct	Nov	Dec	Track Record	Index	Excess Return
2009										-1.85%*	-1.01%	5.85%	2.85%*	3.83%*	-0.98%*
2010	3.20%	0.16%	6.74%	3.72%	-2.01%	2.76%	-1.18%	0.27%	5.32%	0.88%	3.28%	4.04%	30.35%	11.10%	19.25%
2011	-2.69%	1.98%	-0.65%	4.59%	1.17%	-2.85%	-1.59%	-7.72%	-2.99%	7.49%	-1.34%	1.27%	-4.11%	-8.08%	3.97%
2012	2.80%	5.67%	4.54%	2.00%	-2.57%	3.33%	5.85%	-0.61%	1.85%	-0.12%	3.16%	0.45%	29.32%	17.29%	12.03%
2013	2.56%	4.12%	3.04%	-0.71%	0.77%	-1.76%	5.26%	-0.06%	3.24%	0.67%	0.76%	1.47%	20.90%	19.82%	1.08%
2014	0.39%	5.03%	-0.49%	0.00%	2.49%	-0.37%							7.14%	6.15%	0.99%

*Since fund inception 16/10/2009

Past performance is no guide to future performance and the value of investment and income from them can fall as well as rise

Sources: Morningstar, Bloomberg. The above performance is from a previous Fund managed by Christian Diebitsch from 16/10/2009 to 15/07/2014

MANAGER TRACK RECORD

I HIGH CONCENTRATION ≠ HIGH DRAW DOWN RISK

Previous UCITS fund managed by Diebitsch beat MSCI Europe 21 out of 23 index down-months

○ Previous UCITS fund managed by Diebitsch was positive in 10 out of the 23 index down-months

		Jan	Feb	Mar	Apr	May	Jun	Jul	Aug	Sep	Oct	Nov	Dec	Year	Excess Return
2009	Fund										-1.85%*	-1.01%	5.85%	2.85%*	-0.98%*
	MSCI										-3.34%*	1.13%	6.22%	3.83%*	
2010	Fund	3.20%	0.16%	6.74%	3.72%	-2.01%	2.76%	-1.18%	0.27%	5.32%	0.88%	3.28%	4.04%	30.35%	19.25%
	MSCI	-2.88%	-0.18%	7.39%	-0.99%	-4.83%	-0.57%	4.97%	-1.27%	3.33%	2.48%	-1.34%	5.18%	11.10%	
2011	Fund	-2.69%	1.98%	-0.65%	4.59%	1.17%	-2.85%	-1.59%	-7.72%	-2.99%	7.49%	-1.34%	1.27%	-4.11%	3.97%
	MSCI	1.71%	2.52%	-3.48%	3.31%	-0.21%	-2.74%	-2.53%	-10.19%	-4.47%	7.84%	-1.06%	2.10%	-8.08%	
2012	Fund	2.80%	5.67%	4.54%	2.00%	-2.57%	3.33%	5.85%	-0.61%	1.85%	-0.12%	3.16%	0.45%	29.32%	12.03%
	MSCI	3.82%	4.06%	-0.14%	-1.69%	-6.08%	5.16%	4.20%	2.01%	0.87%	0.73%	2.22%	1.43%	17.29%	
2013	Fund	2.56%	4.12%	3.04%	-0.71%	0.77%	-1.76%	5.26%	-0.06%	3.24%	0.67%	0.76%	1.47%	20.90%	1.08%
	MSCI	2.80%	0.96%	1.60%	1.62%	1.92%	-5.11%	5.10%	-0.58%	4.41%	3.84%	1.03%	1.02%	19.82%	
2014	Fund	0.39%	5.03%	-0.49%	0.00%	2.49%	-0.37%							7.14%	0.99%
	MSCI	-1.77%	4.77%	-0.81%	1.88%	2.52%	-0.44%							6.15%	

The benchmark used is the MSCI Europe NR EUR

*Since fund inception 16/10/2009

Past performance is no guide to future performance and the value of investment and income from them can fall as well as rise

Sources: Morningstar, Bloomberg

The above performance is from a previous Fund managed by Christian Diebitsch from October 16, 2009 to July 15, 2014

HEPTAGON EUROPEAN FOCUS EQUITY FUND PARTICULARS

Legal Structure

An open-ended umbrella type investment vehicle authorised pursuant to the European Communities (Undertakings for Collective Investment in Transferable Securities) Regulations 2011, as amended.

Share Classes

AE (Retail) / B (Retail) / IE (Institutional) / CE (Seed)

ISIN / Bloomberg Ticker

AE	IE00BPT33X84	HPEURAE
B	IE00BPT33S32	HEPEURB
IE	IE00BPT34C47	HPEURIE
CE	IE00BPT34575	HPEURCE

Exchange Listed

None

Registered for Retail Sale

Austria, Belgium, Denmark, Finland, France, Germany, Ireland, Italy, Luxembourg, Netherlands, Norway, Spain, Sweden, Switzerland, UK

Registered for Accredited Investors

Singapore (CISNET restricted scheme)

Tax Transparent

Austria, Germany, UK

Minimum Investment

AE = €15,000 / B = \$15,000 / IE = €2,000,000 / CE = €1,000,000

Management Fee

AE = 1.50% / B = 1.95% / IE = 1.15% / CE = 0.90%

Subscriptions

Daily - T+2 Settlement

Redemptions

Daily - T+3 Settlement

Lock-up Provision

None

Leverage

None

Investment Manager

Heptagon Capital

Management Company

Carne Management Company Ireland

Depositary

Brown Brothers Harriman Trustee Services (Ireland) Limited

Administrator

Brown Brothers Harriman Fund Administration Services (Ireland) Limited

Lawyers

Simmons & Simmons LLP, Dublin

Auditor

Grant Thornton LLP



**Christian
Diebitsch**
Fund Manager

Christian has over 30 years of equity market experience as an Analyst and a Portfolio Manager. After starting his investment research career in Stockholm in 1990, he transferred to London in early 1991 where he joined James Capel & Co. as a Scandinavian Analyst. He moved to Kleinwort Benson Securities in a similar capacity in 1992 and to Paribas in 1994. From the mid-1990s to 2003, his equity research coverage ranged from pan-European engineering and capital goods, to support services and financial exchanges. Christian changed position to the buy-side when he joined W.P. Stewart & Co. as a Portfolio Manager and Analyst in early 2004. He held these positions until October 2008 when he moved to Seilern Investment Management where he launched the Stryx Europa Fund. This Fund went on to become the top-rated long-only European quality growth fund by the time he left the firm in July 2014 to join Heptagon Capital. Christian graduated from the Stockholm School of Economics with a MSc degree in Financial Economics.

HEPTAGON CAPITAL PERSONNEL

Heptagon Founding Partners

Eran Ben-Zour
Founding Partner

Tarek Mooro
CEO & Founding Partner

Fredrik Plyhr
Founding Partner

Manager of European Focus Equity Fund

Christian Diebitsch
(Fund Manager)
35 years' industry experience

Investment Team

Arnaud Gandon
(Partner and CIO)
25 years' industry

Alexander Gunz
(Fund Manager)
27 years' industry
experience
Manager of Future Trends
Equity Fund

Daniel Too
(Director)
18 years' experience
experience

Graham Wilkins
(Jr. Portfolio Manager)
17 years' experience

Michael Idowu
(Sr. Equity Analyst)
5 years' experience

Jamie Collier
(Associate)
2 years' experience

Corporate/ Legal/ Compliance

Robert Rosenberg,
CFA (Partner & COO)

Darryl Vine
(Managing Director – Head of Compliance)

Business Support

Rebecca Simmons (Director)
Melissa Zuanello (Director)
Marlton Smalling (Chief Technology Officer)
Andrew Zarb (Head of Fund Operations & VP)
Rachel Neill (Head of Sustainability)
Gabriela Strassberg (Vice President)

Johanna Claesson (Vice President)
Clementina Baena (Vice President)
Francesca Pace Gouder (Vice President)
Alisa Mulic (Senior Associate)
Julia Azzopardi (Senior Associate)
Loucas Louca (Associate)

Guy Blandford-Newson (Associate)
Zheer Molod (Associate)
Martina Georgieva (Associate)
Matteo Catanzaro (Associate)
Ruan Oliver (Analyst)
Elizabeth Bond (Office Manager)

Institutional Sales

15 dedicated professionals

DISCLAIMER



DISCLAIMER

Heptagon Capital Limited, Heptagon Capital LLP and its affiliate companies and its members, officers, employees, agents and advisors disclaim any and all liability relating to these materials, except to the extent required by applicable law or regulations, including, without limitation, any express or implied representations or warranties for statements or errors contained in, and omissions from, these materials. Certain assumptions have been made, and/or parameters set, in the preparation of these materials which have resulted in the returns detailed herein, and no representation or warranty is made that any returns indicated will be achieved. Changes to assumptions or parameters may have a material impact on the returns detailed. This document should not be copied to any other person without our express consent. This document should not be considered an offer to buy or sell investments.

Heptagon Capital Limited has issued this communication as investment manager for Heptagon Fund ICAV (the "ICAV"), an umbrella fund with segregated liability between sub-funds (the "Funds") and authorised pursuant to the European Communities (Undertakings for Collective Investment in Transferable Securities) Regulations, 2011, as amended, and is licensed to conduct investment services by the Malta Financial Services Authority. Heptagon Capital LLP is authorised and regulated in the UK by the Financial Conduct Authority and is the sub-investment manager for a number of the Funds.

The results given in this document are based solely upon historical fund performance as gathered and supplied by Brown Brothers Harriman Fund Administration Services (Ireland) Limited, the ICAV's administrator, FactSet, Bloomberg, MSCI and Morningstar. That past performance has not been independently verified by either Heptagon Capital Limited or Heptagon Capital LLP. It is not intended to predict or depict the future performance of any investment.

The information contained herein is provided for informational purposes only, is not complete, and does not contain certain material information about the Funds, including important disclosures and risk factors associated with an investment in the Funds. Before making an investment in any Fund, prospective investors are advised to thoroughly and carefully review the ICAV's [Prospectus](#) (the "Prospectus") as well as the supplement to the Prospectus for the Fund and the Fund's key investor information document with their financial, legal and tax advisors to determine whether an investment is suitable for them. An investment in the Funds is not suitable for all investors.

The distribution of information contained herein and the sale of shares in the Funds may be subject to legal or regulatory restrictions in certain countries in which applicants for shares are resident or of which they are citizens. In particular, neither the shares in the Funds nor the Funds themselves have been registered under any United States ("US") Securities legislation and are not available for purchase by US persons (as defined in the Prospectus).

The Heptagon European Focus Equity Fund has been categorised as an Article 8 for the purposes of the EU's Sustainable Finance Disclosure Regulation. The Heptagon European Focus Equity Fund promotes environmental and/or social characteristics but does not have sustainable investment as its primary objective. It might invest partially in assets that have a sustainable objective, for instance assets that are qualified as sustainable according to EU classifications but does not place significantly higher importance on the environmental objective of each underlying investment. Please see [Prospectus](#) and supplement for the Heptagon European Focus Equity Fund for further information on the Heptagon European Focus Equity Fund's environmental and/or social characteristics and relevant sustainability risks and principal adverse impacts which may impact the Heptagon European Focus Equity Fund's performance.

DISCLAIMER

Source: MSCI. This report contains information (the “Information”) sourced from MSCI Inc., its affiliates or information providers (the “MSCI Parties”) and may have been used to calculate scores, ratings or other indicators. The Information is for internal use only, and may not be reproduced/redisseminated in any form, or used as a basis for or a component of any financial instruments or products or indices. The MSCI Parties do not warrant or guarantee the originality, accuracy and/or completeness of any data or Information herein and expressly disclaim all express or implied warranties, including of merchantability and fitness for a particular purpose. The Information is not intended to constitute investment advice or a recommendation to make (or refrain from making) any investment decision and may not be relied on as such, nor should it be taken as an indication or guarantee of any future performance, analysis, forecast or prediction. None of the MSCI Parties shall have any liability for any errors or omissions in connection with any data or Information herein, or any liability for any direct, indirect, special, punitive, consequential or any other damages (including lost profits) even if notified of the possibility of such damages. (www.msci.com)

This disclosure was developed using information from MSCI ESG Research LLC or its affiliates or information providers. Although Heptagon Fund ICAV information providers, including without limitation, MSCI ESG Research LLC and its affiliates (the “ESG Parties”), obtain information (the “Information”) from sources they consider reliable, none of the ESG Parties warrants or guarantees the originality, accuracy and/or completeness, of any data herein and expressly disclaim all express or implied warranties, including those of merchantability and fitness for a particular purpose. The Information may only be used for your internal use, may not be reproduced or redisseminated in any form and may not be used as a basis for, or a component of, any financial instruments or products or indices. Further, none of the Information can in and of itself be used to determine which securities to buy or sell or when to buy or sell them. None of the ESG Parties shall have any liability for any errors or omissions in connection with any data herein, or any liability for any direct, indirect, special, punitive, consequential or any other damages (including lost profits) even if notified of the possibility of such damages.

The Global Industry Classification Standard (“GICS”) was developed by and is the exclusive property and a service mark of MSCI Inc. (“MSCI”) and S&P Global Market Intelligence (“S&P”) and is licensed for use by Heptagon Fund ICAV. Neither MSCI, S&P, nor any other party involved in making or compiling the GICS or any GICS classifications makes any express or implied warranties or representations with respect to such standard or classification (or the results to be obtained by the use thereof), and all such parties hereby expressly disclaim all warranties of originality, accuracy, completeness, merchantability and fitness for a particular purpose with respect to any of such standard or classification. Without limiting any of the foregoing, in no event shall MSCI, S&P, any of their affiliates or any third party involved in making or compiling the GICS or any GICS classifications have any liability for any direct, indirect, special, punitive, consequential or any other damages (including lost profits) even if notified of the possibility of such damages.

For all definitions of the financial terms used within this document, please refer to the glossary on our website: <https://www.heptagon-capital.com/glossary>

Past performance is no guide to future performance and the value of investment and income from them can fall as well as rise.

Heptagon Capital LLP

63 Brook Street, Mayfair,
London W1K 4HS
Tel: +44 20 7070 1800

Authorised & Regulated by the
Financial Conduct Authority (FRN 403304)

Heptagon Capital Limited

The Hedge, Triq ir-Rampa ta’ San Giljan,
St Julians, STJ 1062
Malta

Licensed to conduct investment services by the
Malta Financial Services Authority (C59542)